

MISSION YOUTH & FAMILY

-FUNDAMENTALS-



MISSION YOUTH

A Regnum Christi Apostolate

Started in Mexico in 1980s... present today in over 15 countries



What does this apostolate do?

Mission Youth & Family offers in person Catholic evangelization missions

- TWO EQUAL OBJECTIVES:
 - To offer effective service and evangelization impact to local parishes/communities.
 - To form and accompany the mission participants in their identity as Catholic “missionary disciples”, or as we would say in Mission Youth, from volunteers to apostles



Core Principles

Make Disciples of all nations

- **Catholic:** openly Catholic organization, all leadership is Catholic
- **Service to the local Church:** all missions done with blessing of local parish priest and are aligned with his pastoral plan.
- **Rooted in the Regnum Christi Charism:** a core expression of our charism
- **Evangelization focused:** focus is bringing God's love, Word, sacraments & prayer over material help
- **Service to the local community:** serving an objective need in the community

Types of Missions

Mission Youth & Family offers different types of mission experiences for all ages

AGE BRACKETS

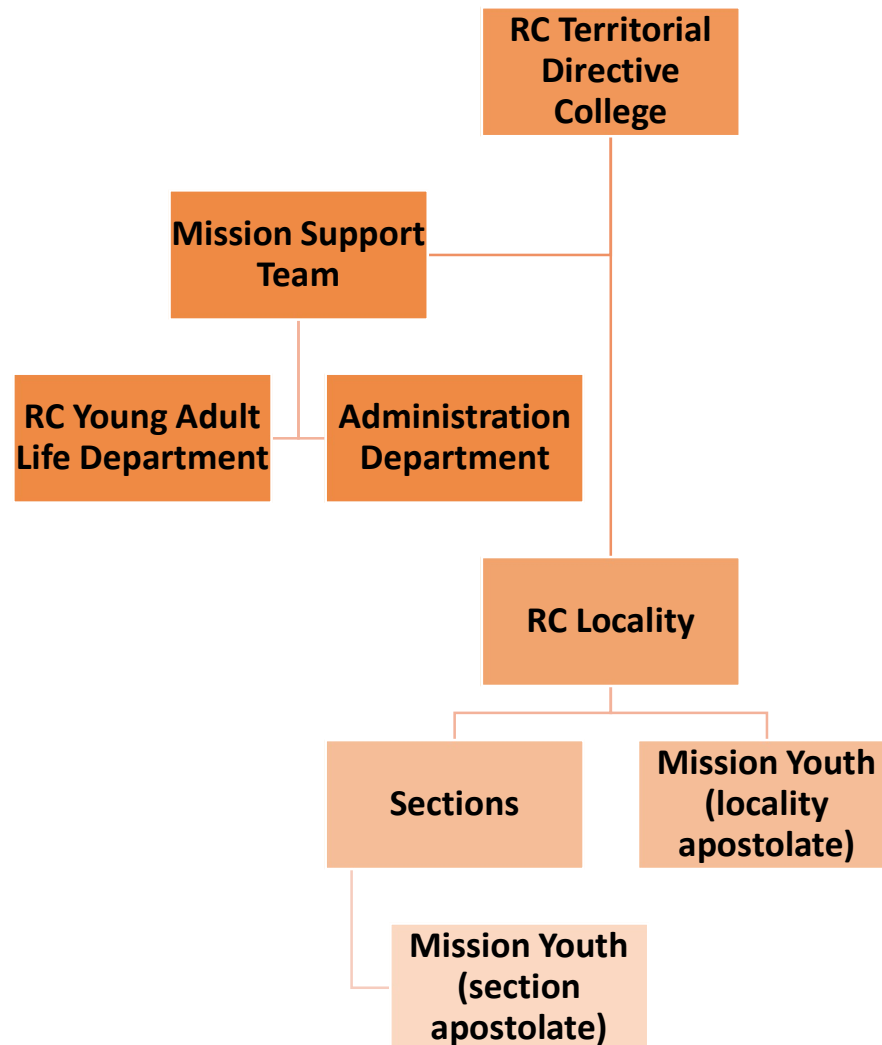
- Families
- Young Adults 18+
- ECYD: teens



TYPES OF MISSIONS

- **International Missions**: coordinated through the RC Young Adult Life Department & preferably partnering with local Regnum Christi in that country.
- **Domestic Missions**: hosted by local Mission Youth & Family leadership
- **Holy Week Missions**: Directed and operated locally with some support from the RC Young Adult Life Department
- **Local Day Missions**: directed and operated locally

Mission Youth & Family Structure



Regnum Christi localities are free to organize Mission Youth & Family in whatever way best suits their local needs. Mission Youth & Family is typically either a section apostolate overseen and supported by the corresponding ECYD, Young Adult, or Adult section director, or a locality apostolate overseen by the local RC Director.

Mission Youth & Family Structure

Territorial Support

- **Territorial Directive College:** sets policies for safe environment, codes of conduct, insurance requirements, and international mission site approval
- **RC Young Adult Life Department:** provides accompaniment for localities and sections running local, domestic and international missions, and helps connect mission leaders across sections and localities
- **RC Administration Department:** provides administrative resources and support, approves international mission sites, and manages the online store

Mission Youth & Family: Logistics

Mission responsibilities

Missionary Formation

- Mission Team Leaders
- Formation experts
- Sacraments
- Opening & closing prayer
- Communication (before, during & after mission)

Mission Experience

- Host parish & priest
- Local venue or partner
- Clarity of need the mission is answering & how
- Donations & donors
- Mission Schedule
- Mission gear (T-shirts, etc)

Mission Logistics

- Promotion: flyer, social media, emails & invitations
- Registration forms
- Transportations & drivers
- Food & supplies
- Chaperones
- Budget

Goal of the Mission

The mission is by nature a passing event. It is not meant to be a final resting place or community for the participants but a launching pad into a deeper living of the Catholic faith.



Essential Elements

Each Regnum Christi locality, supported by the RC Young Adult Life Department, helps safeguard the apostolic identity of Mission Youth & Family as a national apostolate. The four essential areas of RC charism, safety, financial stability and legal parameters ensure a solid foundation and framework for our missionary work.



Essential Elements: RC Charism

SRC #8. To fulfill our mission, we seek to make present the mystery of Christ who goes out to people, reveals the love of his heart to them, gathers them together and forms them as apostles and Christian leaders, sends them out and accompanies them as they collaborate in the evangelization of people and of society.

ESSENTIAL CHARISMATIC ELEMENTS:

- Unity and charity
- Christ-centered
- Union with and service to the Church
- Personal encounter
- Evangelization focused
- RC Spiritual family (LCs, CRCs, RC)
- Missionary protagonism & freedom
- Prayer and sacramental life
- Catholic formation and teaching



Essential Elements: *Financial*

Goal: all missions are financially self-sustained and local Mission Youth & Family should be financially healthy

Support: customerservice@rcfed.org

ESSENTIAL FINANCIAL ELEMENTS:

- Missionaries should pay for the basic mission costs.
- Missionaries should be encouraged to fundraise to help cover mission cost rather than ask for a discount.
- Mission Directors should create a local budget that includes fundraising & gifts in kind (involving the local community in supporting the mission)

Recommended Costs:

- Local day mission: \$15.00 per person
- Holy Week Mission: \$50-75 per person per day
- Domestic week-long Mission: \$375-500 per person
- International Mission: \$750-950 per person

Recommended Stipends:

- Mission Leader: \$100 per day
- Priest Mass/confessions: \$50
- Priest mission chaplain: \$100 per day
- Consecrated woman spiritual support: \$75 per day

Essential Elements: *Legal*

Goal: that all our missions are legally compliant.

Support: customerservice@rcfed.org

ESSENTIAL LEGAL ELEMENTS:

- All local missions need to be registered as mission events with RC Activities
- All missions need to use the relevant registration forms & waivers
- All lodging & transportation contracts need to be reviewed prior to mission
- Online registration platform should be locality approved and meet all RC Activities, Inc. standards

Essential Elements: *Safety*

Goal: that all missions & missionaries are able to have a complete & meaningful mission in a safe way.

Contact: customerservice@rcfed.org

ESSENTIAL SAFETY ELEMENTS:

- All adult chaperones need to have their diocesan safe environment certificate, their RC Volunteer certification and background check.
- Missions should comply with Safe Environment handbook
- All transportation should be done with public transportation, hired or RC Activities Inc.-certified drivers.

Mission Safety:

- All Mission Leaders & guides should be appropriately trained, they should know the mission schedule, their teams, & safety protocols.
- Missionaries should be dressed in appropriate mission gear & never be left alone.
- All local missions should have safety protocols in place according to their local mission reality.
- All international mission sites must be approved by the RC Administration Department.

Essential Elements: Communication & Marketing

All registered missions have permission to use the Mission Youth & Family name & logo for all communication, marketing, social media, etc. regarding that mission. Regnum Christi provides a brand kit and communication plan and can train your local team.

All mission gear can be purchased through the online store.

Store: <https://store.missionnetwork.com/collections/mission-youth>

COLOR PALETTE



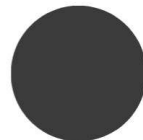
#df4417



#f38a00



#ffdb00



#3b3b3b

CLASSIC FONTS

Dakota Regular
Segoe UI Regular
Template Gothic Bold
Template Gothic Bold

OTHER FONTS

EDMUND
SAILORS
HEY GOTCHA!
Glacial Indifference
COOPERATIVE
Dosis Semi Bold
Dosis Regular