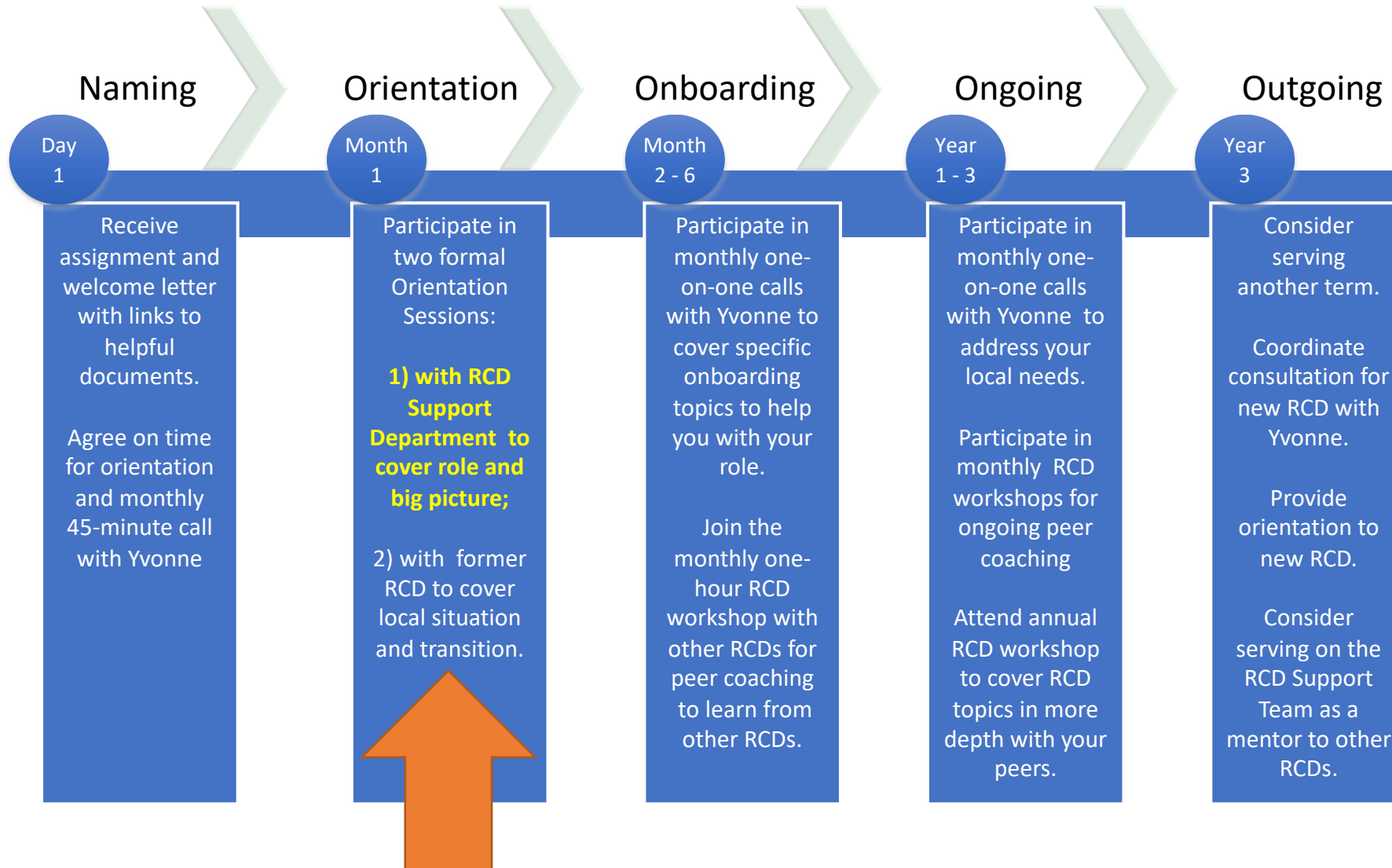


# RC Director Orientation

---

A Short Guide

Being the RC Director is a big job! And as a new RC Director, there is much to learn. The RCD Support Department is here to accompany you throughout the three or more years you will be serving as RC Director – from naming to outgoing, including a formal orientation and onboarding process.



This slide deck supports the new RCD Orientation Session provided by the RCD Support Department



# RCD Orientation Sessions With the RCD Support Director

1. Role of the RC Director in relation to the other roles present within the locality
2. Regnum Christi and ECYD across the Territory
3. Federation governance and lines of reporting for the RC Local Director
4. The Mission Support Team, its members and the services and support available
5. Current territorial strategy and how it applies to the locality
6. Territorial programs to support locality evangelization efforts
7. Choosing your RCD Council members
8. Building your RCD Leadership Team
9. Working with the LCs and CRCs in the locality
10. Decisions requiring Territorial Directive College approval
11. Locality visits
12. Monthly RCD Workshop calendar

# RC Federation Regulations



## Contents

1	Background .....	1
2	General Definitions .....	1
3	Locality Governance .....	2
3.1	Locality Level Structure, Roles and Responsibilities .....	2
3.2	Local RC Director Job Description .....	3
3.3	RCD Council Job Description .....	4
3.4	RC Local College Job Description .....	5
3.5	Locality Governance and Reporting Procedures .....	6
4	Territory Governance .....	8
4.1	Territorial Level Structure, Roles and Responsibilities .....	8
4.2	Territorial Directive College Job Description .....	9
4.3	Mission Support Team Director Job Description .....	10
4.4	Items requiring Mission Support Team Director Approval .....	11
4.5	Items requiring Territorial Directive College Approval .....	11
4.6	Items requiring General Directive College Approval .....	12
4.7	Territorial Directive College Meetings .....	12

# Role of the RC Director

---

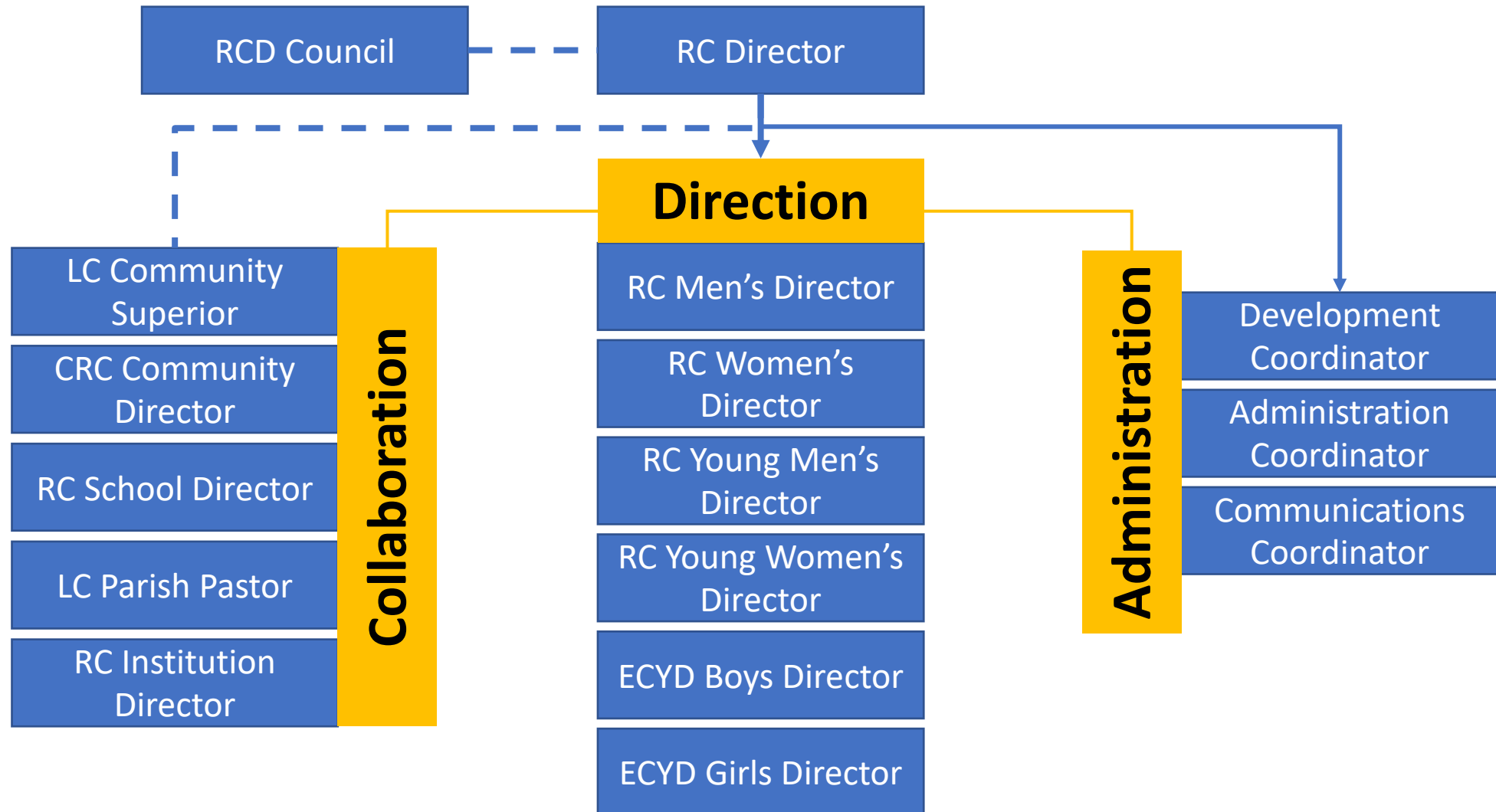
The local RC Director oversees the development and projection of the Regnum Christi Federation at the local level – fostering charismatic unity among all Regnum Christi present in the locality and overseeing the participation of lay members and any apostolic activity that belongs to the Federation.

Broadly speaking, the role of the local RC Director entails:

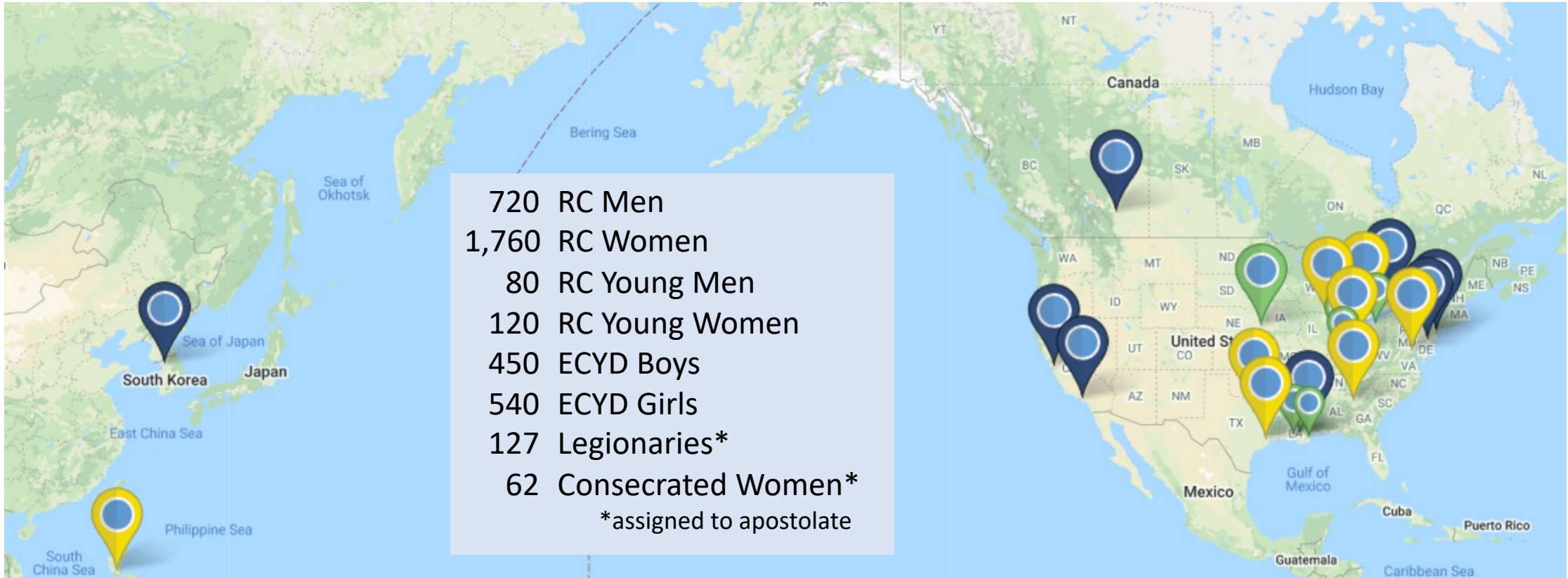
- Facilitating **collaboration** among all Regnum Christi entities present in the locality toward building a common vision for the life and mission of RC in the locality.
- Providing the **direction** and support to section directors and Federation apostolate directors.
- Overseeing the **administration** responsibilities needed to support the efficient functioning of the locality.

# Role of the RC Director

*in relation to the other roles present within the locality*






# Regnum Christi and ECYD across the North American Territory – July 2021



720 RC Men  
 1,760 RC Women  
 80 RC Young Men  
 120 RC Young Women  
 450 ECYD Boys  
 540 ECYD Girls  
 127 Legionaries\*  
 62 Consecrated Women\*  
 \*assigned to apostolate

## Locality Legend:

-  Locality with LC Community
-  Locality with LC & CRC Community
-  Locality with no communities

## 24 Localities

Atlanta - Fr. Lino Otero, RCD  
 Baton Rouge – William Stegall, RCD  
 Calgary - Fr. Kenneth Leblanc, RCD  
 Chicago - JoAnn Conover, RCD  
 Cincinnati – Fr. Matthew Summe, RCD  
 Dallas - Andrew Rawicki, RCD  
 Detroit - Matt Williams, RCD  
 Heartland – Herb Reese, RCD  
 Houston - Fr. Eamonn Shelly, RCD  
 Indianapolis - Renée Schoening, CC

Korea - Fr. Simon Chung, RCD  
 Lafayette – Eddie Cramer, RCD  
 Los Angeles - *Vacant*  
 Louisville – Joe O'Connor, CC  
 New Orleans – Lauren Lagarde, RCD  
 NY Tri-State - Hope Hirshorn, RCD  
 NE Ohio - Rich Amiot, RCD  
 Northshore – Annette Barrios, RCD  
 Ontario - Fr. Louis de Vaugelas, CC  
 Philadelphia – Fr Scott Reilly LC, RCD

Philippines - Fr. Andre LaSana, RCD  
 San Jose - Fr. Thomas Vendetti, CC  
 Washington – Steve Grundman, RCD  
 Virtual Locality - Donna Garrett, RCD

*RCD: RC local director*  
*CC: RC local college chair*

# FEDERATION GOVERNANCE AND LINES OF REPORTING FOR THE RC LOCAL DIRECTOR – JULY 2021

## PLENARY COUNCIL

### LC Councilors

Fr. John Bartunek  
Fr. Steven Reilly  
Fr. Juan Jose Hernandez

### CRC Councilors

Mary Smith  
Naoise Johnston  
Melanie Zoll

### Lay Representatives

Antonio Maza, LCRC  
Horacio Gomez  
Lisa Summers



## TERRITORIAL DIRECTIVE COLLEGE

### MISSION SUPPORT TEAM

MST Director – Cathie Zentner  
RCD Support – Yvonne Nuxoll  
RC Life – Donna Garrett  
ECYD Life – Maria Knuth  
Marketing & Communications – Kerrie Rivard  
Territorial Administrator – Todd Brechbill

### LOCALITIES

RCD Directors  
RC Local Colleges







# REGNUM CHRISTI

## Mission Support Office

Helping Localities Build Vibrant Communities of Apostles



**Mission Support Team  
Director**  
Cathie Zentner  
[czentner@rcfed.org](mailto:czentner@rcfed.org)

- Reports to the Territorial Directive College (TDC)
- Oversees implementation of the TDC's strategic plan to further the RC mission in this territory
- Provides MST leadership



**RC Director Support**  
Yvonne Nuxoll  
[ynuxoll@rcfed.org](mailto:ynuxoll@rcfed.org)

- Trains and accompanies RC Local Directors and RC Local College chairs
- Liaises between locality leadership and the territory
- Facilitates consultations for locality leadership



**Regnum Christi Life**  
Donna Garrett  
[dgarrett@rcfed.org](mailto:dgarrett@rcfed.org)

- Trains and accompanies RC Section Directors.
- Trains and supports team leaders, spiritual directors and chaplains
- Oversees Mission Youth, RC Mission Corps and RC Spirituality Center



**ECYD Life**  
Maria Knuth  
[mknuth@rcfed.org](mailto:mknuth@rcfed.org)

- Trains and accompanies ECYD Directors.
- Trains and supports ECYD mentors and team leaders
- Oversees Challenge & Conquest and ECYD Mission Corps



**Marketing &  
Communications**  
Kerrie Rivard  
[krivard@arcol.org](mailto:krivard@arcol.org)

- Executes on territorial communications and marketing plan
- Trains and supports locality communicators.



**Administration**  
Todd Brechbill  
[tbrechbill@rcfed.org](mailto:tbrechbill@rcfed.org)

- Oversees territorial administration for the RC Federation
- Provides administration and operational support for national programs.
- Trains and provides support for locality administration (bookkeeping, event management, insurance, etc.)

# 5. Current territorial strategy and how it applies to the locality

[LINK](#)

The graphic is a white rectangular area with a light blue border. At the top left is the Regnum Christi logo, a red shield with a gold cross and a crown. To its right is the text 'REGNUM CHRISTI' in a serif font. Further right is the title 'NORTH AMERICAN TERRITORIAL STRATEGY 2021-2024' in a blue serif font. Below the title are six sections arranged in a 2x3 grid. Each section has a red icon, a title in blue, and text in red. The icons are: a heart with a flame, a shield with a cross, a location pin, a cross with people, a flame, and a flag. The text in each section describes the purpose, beliefs, strategy, mission, desire, and priorities of the territory.

**REGNUM CHRISTI**

**NORTH AMERICAN TERRITORIAL STRATEGY 2021-2024**

**OUR PURPOSE**

We seek to give glory to God and make the Kingdom of Christ present in the hearts of all people and in society, by our sanctification in the state and condition of life to which God has called us, and by personal and communal apostolic action. [\(SRCE 7\)](#)

**OUR BELIEFS**

- We believe in the transforming power of our charism given to us by the Holy Spirit to build the Kingdom.
- We believe in the potential of each member to live that charism as an apostle.
- We believe that by collaborating we can make a bigger impact on the mission.

**OUR STRATEGY**

To build and sustain localities as vibrant communities of apostles [\(SRCE 29, RL 9\)](#)

**OUR MISSION**

To fulfill our mission, we seek to make present the mystery of Christ who goes out to people, reveals the love of his heart to them, gathers them together and forms them as apostles and Christian leaders, sends them out and accompanies them as they collaborate in the evangelization of people and of society. [\(SRCE 8\)](#)

**OUR DESIRE**

To ignite the heart of the apostle who sees the needs of the world and the Church, discerns through the lens of our charism, and steps out boldly in mission.

**OUR PRIORITIES**

1. Form the formators. [\(SRCE 30, 36\)](#)
2. Promote communion through healthy collaboration and communication, vertically and horizontally. [\(SRCE 28-29\)](#)
3. Secure the present and prepare for the future: vocationally, in leadership succession, and financially. [\(SRCE 39\)](#)
4. Give special attention to supporting the evangelization of men and young adults. [\(SRCE 33-39\)](#)

REGNUM CHRISTI  #IAMRC | Legionaries of Christ • Consecrated Women • Lay Consecrated Men • Lay Members

Each locality develops its own locality plan, taking into consideration the mission of Regnum Christi, the needs of the local Church, and the specific circumstances of Regnum Christi within the locality. The locality's plan serves as a unifying vision for Regnum Christi in the locality. It will both drive individual section and local apostolate plans, and encourage collaboration with the school, LC and CRC communities and other Regnum Christi institutions present in the locality. The territory's strategy serves localities as input to the planning process to the extent that the locality will understand where the resources of the territory will be allocated, and thus, what support they can expect from the territory.

# RC Federation Programs

<https://regnumchristifederation.org/>

**RC Members launch apostolates to evangelize and form apostles.**

The RC Federation oversees certain national apostolates (programs) that directly support the RC mission in localities across the territory.



ECYD MISSION CORPS



**MISSION**  
REGNUM  
CHRISTI | **CORPS**



**CONQUEST**



# Locality Leadership

## Choosing your RCD Council members

- 3 or more members
- Advisors on major and/or sensitive decisions
- Some qualities: objective; strategic thinker; prudent; wise; perhaps skilled in areas of RCD weakness; engaged in the mission; influential in building communion across RC.
- Some cautions: limited conflict of interest
- Meets periodically as needed; perhaps 3 times a year.

## Building your RCD Leadership Team

- Working team
- Typically includes all section directors, communications director, fundraising coordinator/officer, locality administrator, key apostolate directors, and a chaplain.
- Can also include other people from time to time (e.g., community directors, councilors, other apostolate directors, etc.)
- Meets regularly; perhaps monthly

# Working with LCs and CRCs in the Locality

[LINK](#)

1. Why a FAQ for Legionaries (LCs) and Consecrated Women (CRCs) working in the Federation?
2. What roles can LCs and CRCs hold in the Federation?
3. Is it a requirement to have LCs and CRCs working in the RC Federation?
4. Who should the LCs and CRCs who work in the Federation report to?
5. Is the locality expected to pay LCs and CRCs who work in the Federation?
6. How committed should LCs and CRCs be to their work in the Federation? Can they take on other apostolates?
7. What orientation is available for LCs and CRCs working in the RC Federation?
8. How is the Community Superior's / Director's role related to LCs and CRCs working in the RC Federation?
9. What is the proper way to address problem when they arise in the Federation?
10. What is the process for assigning LCs and CRCs to roles in the Federation?
11. Which policies and codes of conduct do we need to follow when working with minor?
12. What are some important considerations when working in the Federation?

# Decisions Requiring TDC / MST Approval

- Annual Locality Plan
- Annual Locality Budget
- Extraordinary Financial Decisions (> \$20,000 change from budget)
- Appointments of Section Directors, RC Directors, RC College members, and RCD Council members
- Locality Bishop's Report (via LC office)

The locality owns the local mission. So why does the TDC / MST need to approve anything?

---

The TDC / MST approve certain key decisions to enable it to fulfill its responsibility of protecting the RC identity and facilitating the mission to grow. The TDC / MST is looking to ensure due process is adhered to locally in the interest of the overall mission.

# Annual Locality Visits

## [LINK](#)

- Annual Locality Visits (Spring or Fall) are virtual meetings jointly coordinated between the RCD and Director of RCD Support
- A locality visit facilitates a regular conversation between locality leadership and members of the Mission Support Team with the objective of furthering collaboration in the mission
- Typical program:
  - Introductions; update on local reality; discussion on selected topics
  - One and a half hours; follow-up communication



# Monthly RCD Peer-Coaching Workshops

## PAST TOPICS:

- Priorities and challenges of the RCD role
- Addressing the Challenges of Building Communion in the locality
- Making the most out of Locality Meetings
- Territorial Strategic Plan and its application in the locality
- Accompanying and overseeing Section Directors
- Building up ECYD in the locality
- Understanding the Financial Model of Regnum Christi
- Semester Report from the Mission Support Team
- Assessing the vibrancy of your locality
- Making good use of semester reports and locality visits
- Vocation promotion in the locality
- Supporting the evangelization of Young Adults and Men
- Building strong diocesan relationships/bishops reports
- Inviting people to leadership roles
- Facilitating the development of the Locality's Annual Plan

## Monthly Zoom Call

First Wednesday of the Month  
8 pm to 9pm ET

## Annual Convention

September